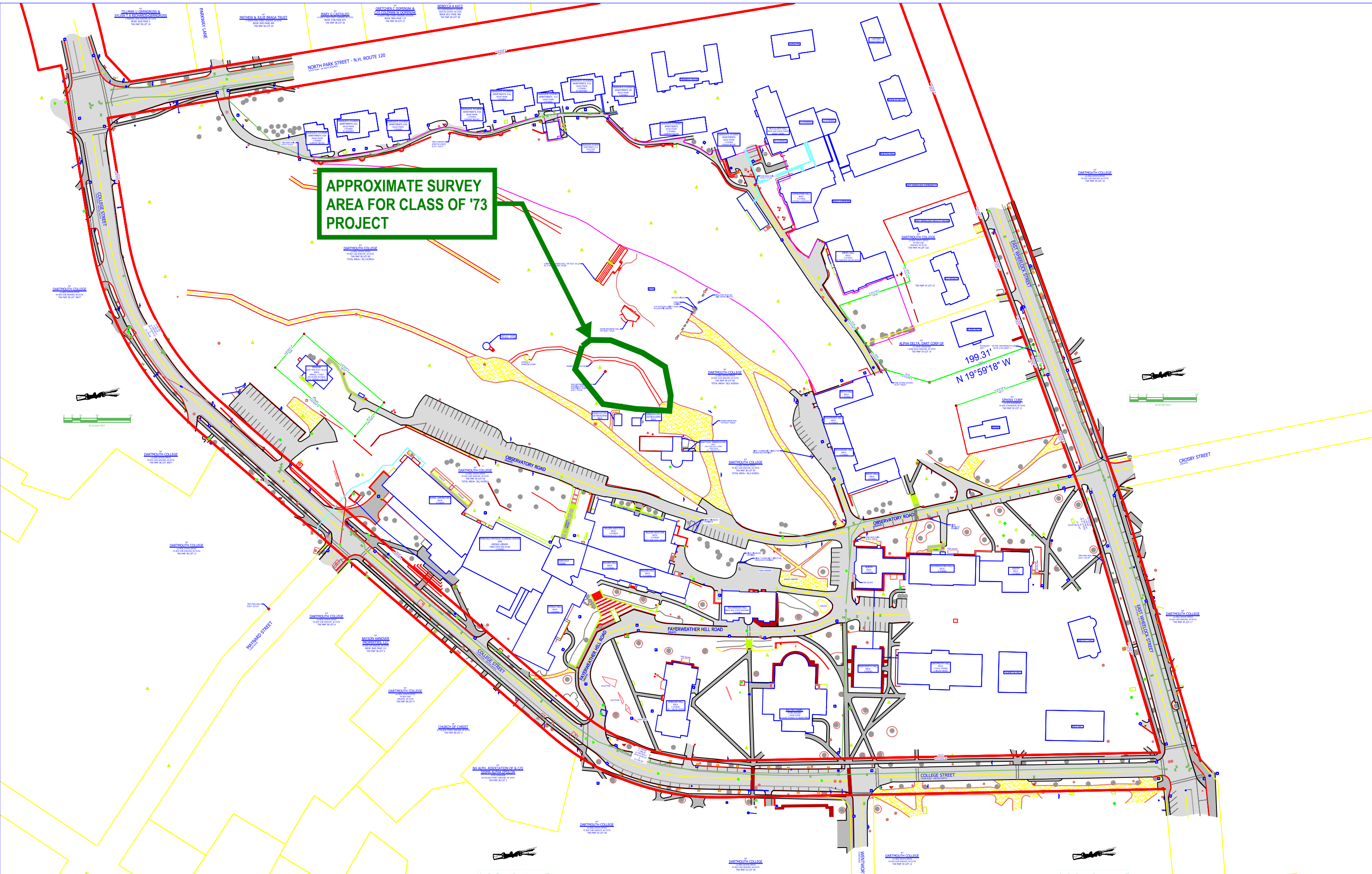
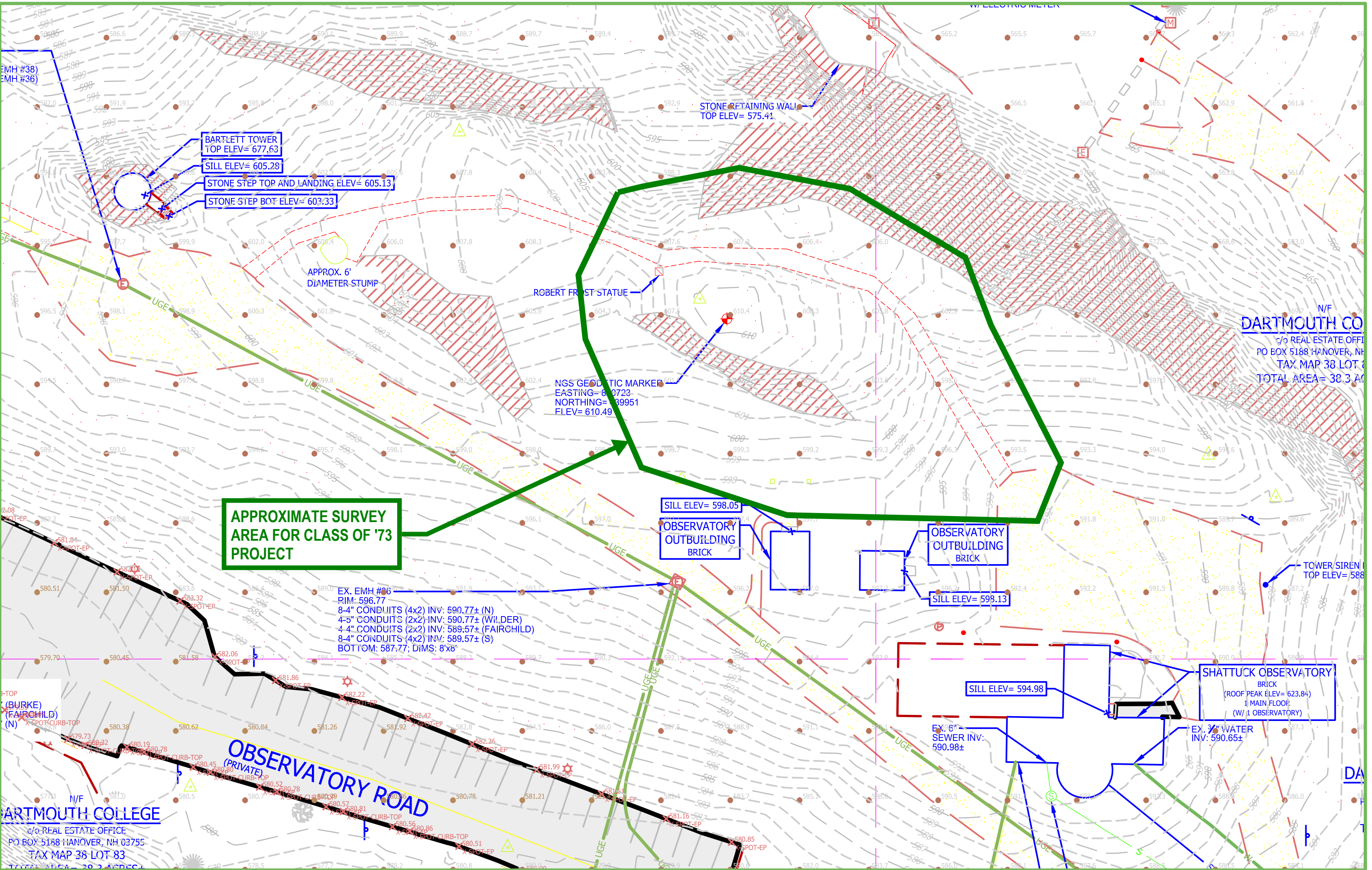


**APPROXIMATE SURVEY
AREA FOR CLASS OF '73
PROJECT**

199.31'
N 19°59'18" W





EMH #38
EMH #36

BARTLETT TOWER
TOP ELEV= 677.63
SILL ELEV= 605.28
STONE STEP TOP AND LANDING ELEV= 605.13
STONE STEP BOT ELEV= 603.33

STONE RETAINING WALL
TOP ELEV= 575.41

APPROX. 6'
DIAMETER STUMP

ROBERT FROST STATUE

NGS GEODETIC MARKER
EASTING= 80723
NORTHING= 139951
ELEV= 610.49

APPROXIMATE SURVEY
AREA FOR CLASS OF '73
PROJECT

SILL ELEV= 598.05
OBSERVATORY
OUTBUILDING
BRICK

OBSERVATORY
OUTBUILDING
BRICK

SILL ELEV= 598.13

EX. EMH #26
RIM= 596.77
8-4" CONDUITS (4x2) INV: 590.77± (N)
4-5" CONDUITS (2x2) INV: 590.77± (WILDER)
4 4" CONDUITS (2x2) INV: 589.57± (FAIRCHILD)
8-4" CONDUITS (4x2) INV: 589.57± (S)
BOTTOM: 587.77; DIMS: 8'x8'

TOWER SIREN
TOP ELEV= 588

SILL ELEV= 594.98

SHATTUCK OBSERVATORY
BRICK
(ROOF PEAK ELEV= 623.84)
1 MAIN FLOOR
(W/ 1 OBSERVATORY)

EX. 6"
SEWER INV:
590.98±

EX. 3"
WATER
INV: 590.65±

OBSERVATORY ROAD
(PRIVATE)

DARTMOUTH COLLEGE

c/o REAL ESTATE OFFICE
PO BOX 5188 HANOVER, NH 03755
TAX MAP 38 LOT 83
TOTAL AREA= 38.3 ACRES

N/F
DARTMOUTH COLLEGE
c/o REAL ESTATE OFFICE
PO BOX 5188 HANOVER, NH 03755
TAX MAP 38 LOT 83
TOTAL AREA= 38.3 ACRES